

IMA Celebrates its 40th Anniversary at New Renovated Headquarters & Factory in Italy

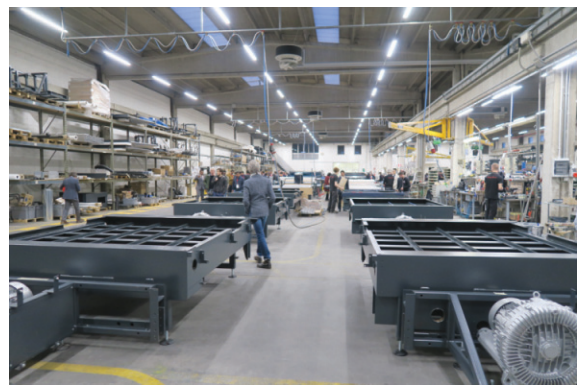


IMA Spa' headquarters in Italy

IMA Spa, world-famous CAM maker celebrates its 40th anniversary this year and held a 40th anniversary commemorating event at the recently renovated Italian headquarters on November 24. This event was attended by about 250 persons of the companies concerned (overseas sales agents/users, domestic Italian dealers/users, etc.) from many countries worldwide such as Bangladesh, India, China, Sri Lanka, Iran, Jordan, Vietnam, South America (Colombia and Mexico), Ethiopia, Russia, Romania, Bulgaria, Serbia and Italy. The attendee companies were internation-

ally renowned brand makers in the fashion industry like Calzedonia, Canali, Lardini and Hugo Boss.

In this event, the manufacturing factory enlarged on a large scale and the headquarters after its renovation were shown and a new CAM product was unveiled. The factory was expanded from previous 3,000 m² to 9,000 m². For the enlargement and renovation, IMA invested EUR 2,500, 000. The aforementioned new CAM product,



The scenes of the new factory of IMA Spa



IMA held a 40th anniversary commemorating event at the recently renovated Italian headquarters on November 24.

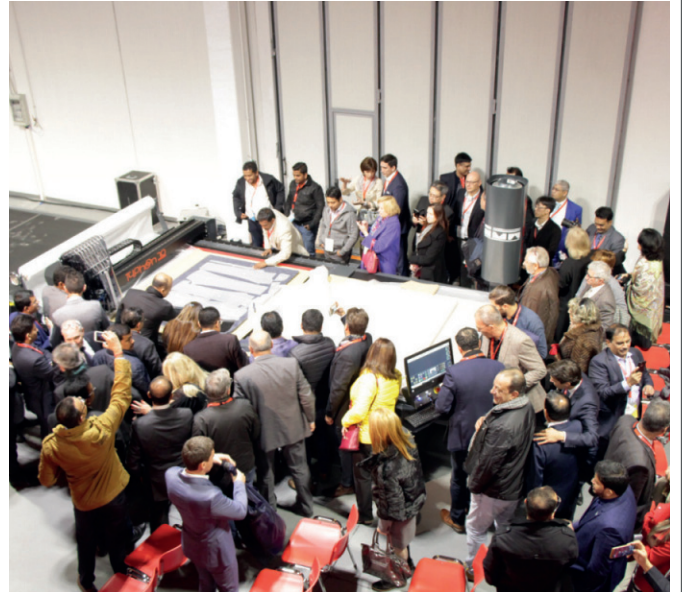
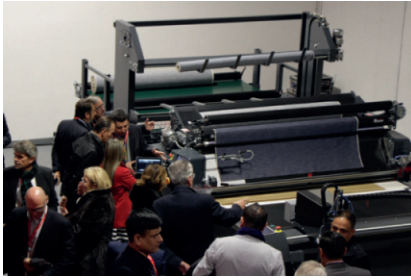
Typhoon 70 drew the participants' attention as a new-type item. Typhoon was developed by IMA's 12 expert R&D staffers taking about 2 years from the conceptual determination. Typhoon 70 is scheduled to market

1977 - 2017

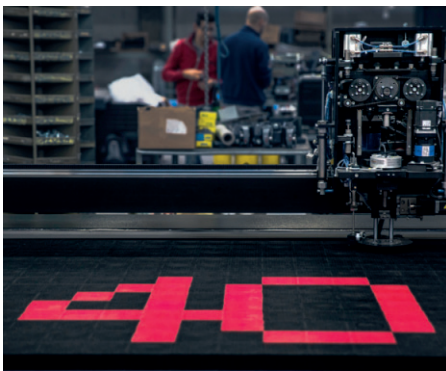
40 years of innovation



Always Ahead



I am
Celebrated



IMM T4Phon

SERIES PRESENTATION



DISCOVER THE NEW WEB SITE WWW.IMAITALY.BIZ



Circle # 19 on Reader Service Card

in the next March (2018) and yearly sales of 40 units are targeted in the initial year. Although Typhoon 70 has a cutting capacity of 7 cm in stacking height, the respective sub-models of 3.5 and 20 cm will be added in the future. This new item is introduced below.

Introduction of Typhoon 70

Typhoon 70 is the 4th generation IMA automatic cutter. An ambitious and innovative project that represents a big step forward, developed thanks to the commitment and collaboration of all the technical staff of IMA.

A new cutting head with blade speed up to 6000 rpm, counter-rotating masses to minimize vibration, blade effort sensors to achieve high cutting quality, proportional valves for pneumatic cylinder control.

The kinematics of the machine is based on a rack pinion system for all axes, guaranteeing high dynamic performance during acceleration, thanks also to zero-point epicyclic gearboxes.

The bridge is governed by an electric axis system, with two engines working in parallel, capable of self-regulating and greater precision in the machine.

A completely new base structure with high strength structural elements and a new suction system with dual turbines ensure high performance.

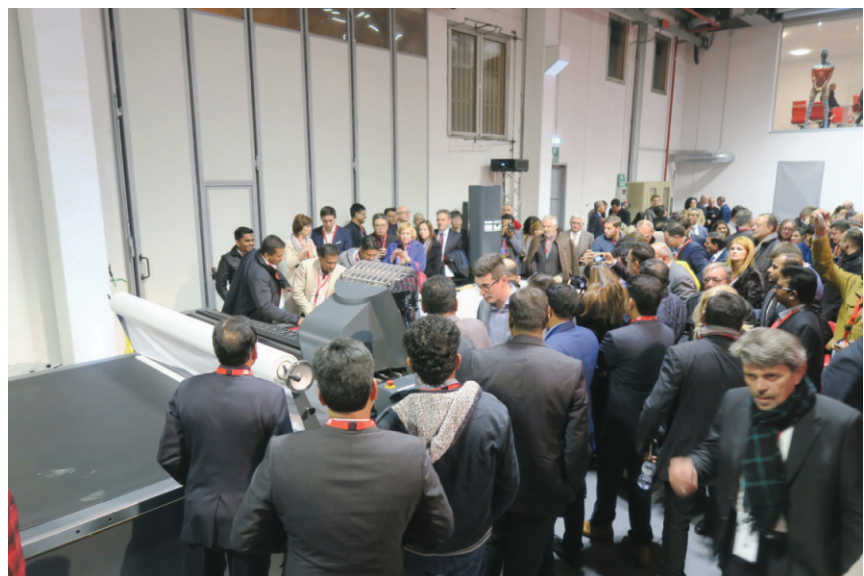
Each single turbine is governed by a dedicated inverter that communicates in real time with each other through the PID control of the numeric control.

A newer, more powerful, fully digital electronics provides greater computing power and immediacy in hardware response.

As Innovations also in the man-machine interface, applications have been redesigned graphically and in functionality, with particular attention to ergonomics and ease of use.

The adoption of a bridge control console has made it easier and faster to carry out routine operations.

Typhoon only has digital controls like all new IMA machines. Thanks to this, the new IMA cutter can be integrated into the Syncro Cutting Room system,



New CAM product, Typhoon 70 drew the participants' attention as a new-type item

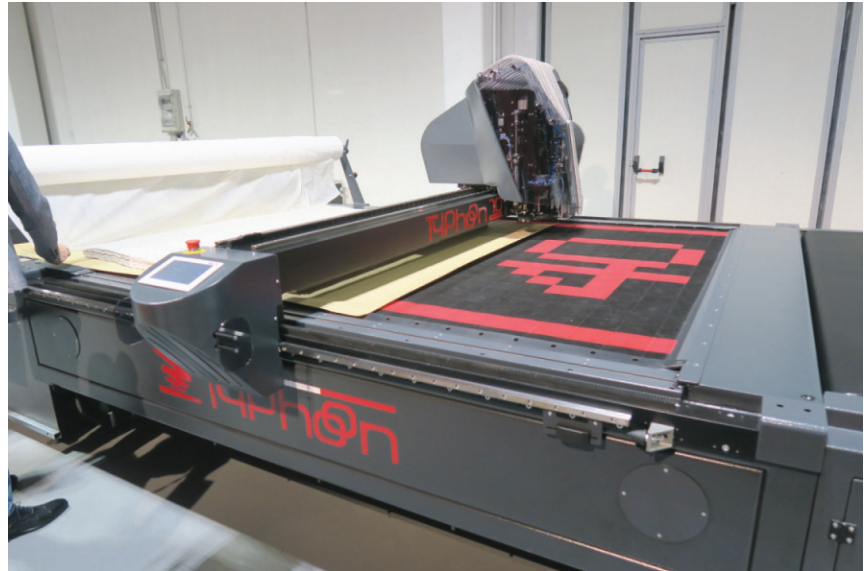
which nowadays is for use both on the web and within the corporate network.

In this 40th anniversary event, IMA SYNCRO CUTTING ROOM was also

proposed besides Typhoon 70. IMA SYNCRO CUTTING ROOM is IMA's complete and integrated line controlled by the new app, web-based that can be



used by any device and from anywhere. Thanks to this app you can monitor in real time the status of your CUTTING ROOM. The information is sent and processed through the latest generation of cloud infrastructure to ensure data security. The system analyzes the process of the production and promptly intervenes in case of problems or particu-



IMA's new CAM, Typhoon 70

late events defined by the customer. In addition, new loader and spreading machine as evolutions of 808.10 loader and 890 spreader were also demonstrated.

Next year's main exhibition for IMA will be on Texprocess America. IMA will also attend some local shows such as in Bangladesh, India, Ethiopia and

all the countries where IMA has already been present. And IMA will wait then for ITMA 2019. IMA's sales in Asia is growing. IMA ASIA has a business base in Bangalore, India. Also, it is planned to set up a branch office in Bangladesh where IMA's sales are brisk.

Circle # 56 on Reader Service Card