

The Fashion

WORLDWIDE CIRCULATION

MACHINE

NEWS



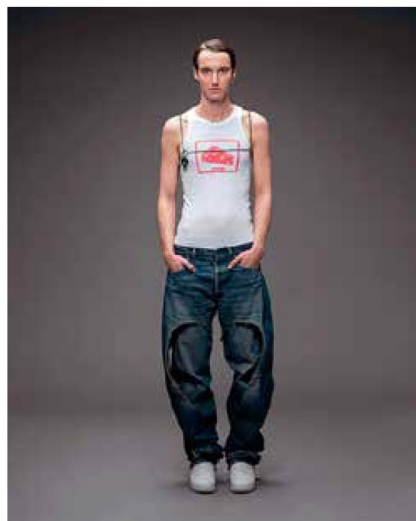
Jenny Hytönen / jennyhytonen.com

You can read the digital version of this issue from the QR code below.



FASHION IN HELSINKI

www.fashioninhelsinki.com



VAIN / jimivain.com



Rolf Ekroth / rolfekroth.com

2024

June
No. 778

The Nippon Sewing
MACHINE
NEWS

The Nippon Sewing Machine News (NMN)
1-9-16, Uemachi, Chuo-ku,
Osaka 540-0005, Japan
Phone: +81-6-6768-2630
Fax: +81-6-6761-5480
E-mail: nmn-news-osaka@power.odn.ne.jp
URL: www.nmn-news-japan.com

Topics in this issue

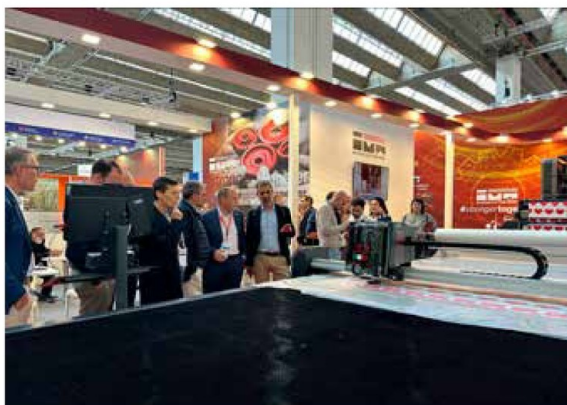
- Review of Texprocess 2024 by Brother
- Review of Texprocess 2024 by Barudan
- MADEIRA highlights from Texprocess 2024
- Review of Texprocess 2024 by JUKI CORPORATION
- Coloreel expands into the Sewing Industry through partnership with Juki America
- IMA spa provides integrated solutions that cover the entire production process
- GUNOLD at Texprocess - follow-up report
- SHIMA SEIKI receives Japan Institute of Invention and Innovation Chairman's Award
- Review of Texprocess 2024 by TAJIMA
- TAJIMA group fully renews corporate website and launches web magazine "TAJIMAG"
- Review of Texprocess 2024 by VI.BE.MAC S.p.a.
- Statistics on sewing machine production/trading in Jan.-Mar.
- EFI Reggiani at ITM Exhibition in Istanbul
- Brother announces changes in representative directors
- Financial results by SHIMA SEIKI
- 3D Tech Fest 2024 by Alvanon

IMA spa Provides Integrated Solutions that Cover the Entire Production Process



IMA spa is a technology partner that works alongside and supports customers with high-tech solutions often customized and tailored to their production needs.

IMA's strengths are experience, vision, innovation, flexibility and a deep knowledge of the Cutting Room. Its offer is vast and includes a specialized range of products covering from digitization systems to CAD with a complete suite of programs for the creation and development of pattern, from cloth rolls handling and management systems, to spreading and cutting lines with the relevant software for the complete organization of the Cutting Room. The company is therefore able to cover the entire production process; from the model to the final phase of automatic cutting of the pieces, with multiple hardware and software solutions.



Collaboration with customers is strategic for IMA and its R&D department: that's why it pays great attention to after-sales service, with an excellent network of agents and dealers all over the world guaranteeing prompt and fast on-site service. In addition, all IMA machinery is controlled by digital technology and meets the Industry

4.0 features of automation and interconnection: therefore, the company is able to connect to them remotely for monitoring its own machines.

IMA participated in Texprocess 2024 and presented a complete line for medium-low production, specific and particularly suitable for today's Italian and European markets (with productions characterized by very low plies or even single ply, with very frequent cloth roll changes, irregular steps with short and jagged spreading).



Ms. Mirella Sardini, President, replied to the questions from The Nippon Sewing Machine News regarding the review of Texprocess as below:

Q: What was your impression about this year's Texprocess?

A: For sure this edition was better than the previous one. In 2022 not so many exhibitors attended the show and unfortunately also the presence of people was not good mainly due to visa problems and also still having COVID effect. For this edition the halls were still empty let's say, but the presence of people was not bad. I can say good. Both customers, potential customer, agents and



potential distributors

Q: What was visitors' response to your products?

A: The response was very good, and visitors really appreciated our line of products.

Q: Other than Germany, from what countries did you receive more visitors?

A: From Europe many French people, Romanian, Belgium, Germany, Bulgaria, Italy, then some Tunisian, Bangladesh, Pakistan, Sri Lanka, some Brazilians. Not so many contacts, but some people were really interested in our solutions and this is the most important aspect. Hope to have a good feed back after the show.

Q: What needs/demands did you feel among your dealers and users? Did you feel any challenging points you should work on, through communication with them?

A: Our slogan for 2024 is #strongertogether, which means that communication for this year is our top priority, in particular, with our dealers and collaborators. This relationship is something that we have always focused on, because so often it's from the collaboration with dealers and customers that the best ideas and innovation come. Furthermore having a good network helps to grow up and to implement the international feature of the company and also the after sales service become more efficient and helpful.

Q: What do you think are the competitive points of your company/products?

A: For sure the complete solutions we can offer to our customers for the cutting room, covering all the production process, other than the very efficient service we propose to our customers and to our dealers. Of course, we are also very flexible and always try to meet our customer's needs and request with a technical and technological approach. Innovation for us is an attitude!

<Exhibits at Texprocess>

IMA Syncro Cutting line is the new solution with the automatic cutting machine model Tempest Plus 922.30 with low thickness for prototyping, tailor-made and small/medium productions, characterized by a new management software, AMI, user-friendly and with particularly smart functions which guarantee greater fluidity in the movements of the cutting head. Thanks to the new vacuum management, the machine has been structurally designed to achieve very high quality results

with maximum reduction in downtime and very high dynamic performance.

Specifically, the line includes:

- **Chronos 812:** Robot for any cloth roll handling and management, structurally designed to be customizable based on customer requests and needs. It reduces the downtime of the spreading line, promptly guaranteeing the availability of the next roll. The technology is totally digital and allows you to instantly check the status of the machine, its operation and its utilities. The structure can be modulated both in length and in height based on the number and diameter of the rolls to be handled.

- **Mithos 892 - Dual Version:** fully digital Spreader 4x4, which uses Mitsubishi technology. The communication between PLC and brushless motors happens through the use of the latest generation servo drives, granting maximum precision. In the Dual version the machine can work in spreading and feeding mode at the same time.

- **Tempest Plus 922.30:** automatic cutting machine for lays up to 30 mm compressed according to the type of fabric to cut. Structurally designed to achieve the highest level of performance and to reduce downtime. The innovative management of the vacuum system and the dynamic management of the cutting window guarantee a high reduction in consumption as well as performance. Moreover the digital technology totally based on Ethercat communication protocol allows to control in real-time the state of the machinery.

- **Cutting Projection System** is a device composed of hardware and software that allows the interactive positioning of the pieces to be cut directly on the fabric. It uses a high-definition and high-brightness projector which is installed on an adjustable height support above the scanning area, located upstream of the cutting plane, allowing the matching of the various pieces on the fabric design (writings and logos, drawings, some types of checks and stripes, etc.).

- **Pickup Identifier** is a device composed of hardware and software that allows you to identify and mark pieces just cut, directly on the machine's unloading section. It uses a personal computer equipped with a touch display and a small thermal printer for adhesive labels.

www.imaitaly.it